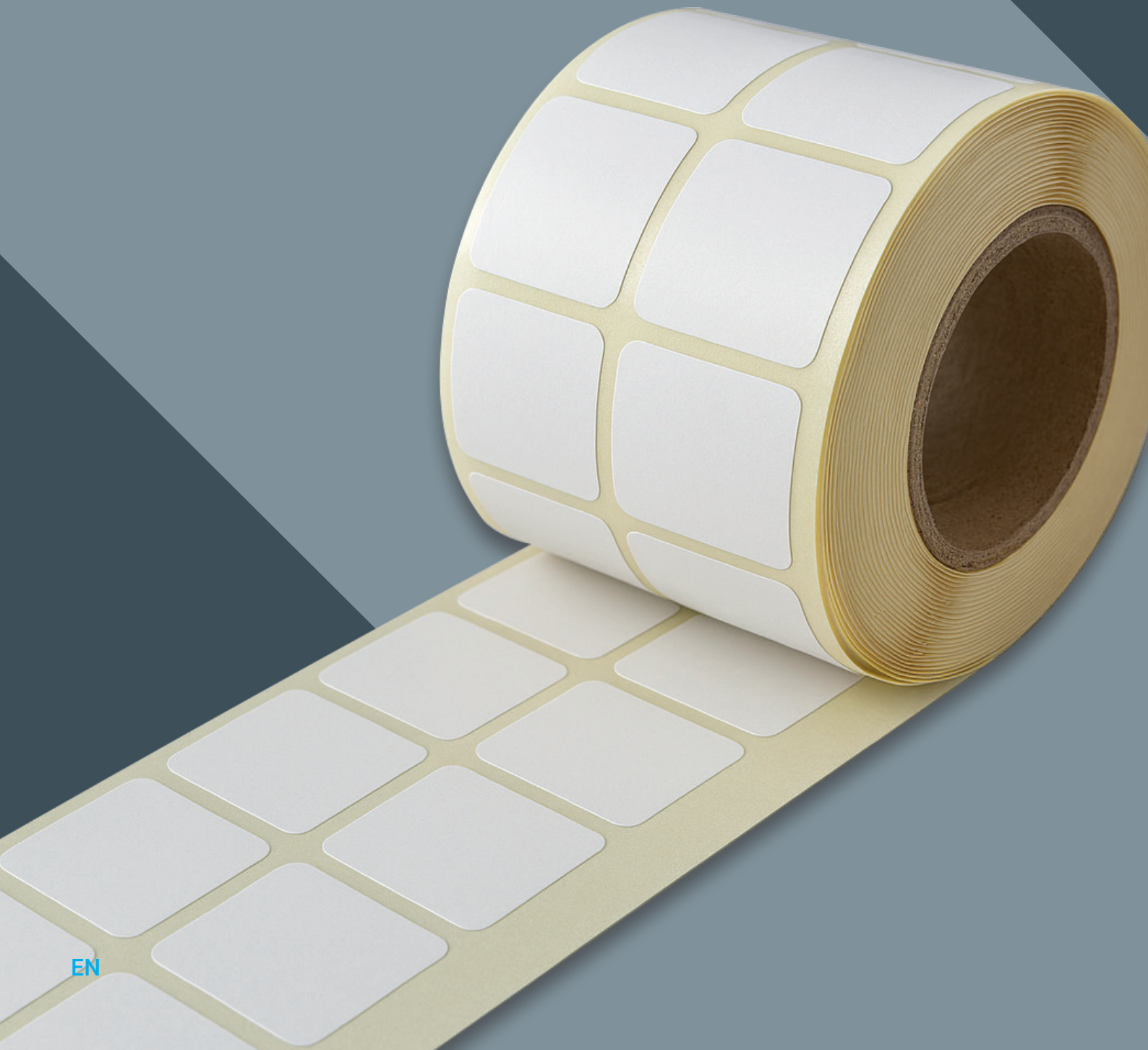


RELEASE LINER

SMART SILICONE PROCESSING.
PERFECT RELEASE RESULTS.



PGM SILICONE

PGM Silicone is a high precision inline gear metering system that delivers flexible, modular and material versatile processing of silicone formulations on demand directly to the coating line.



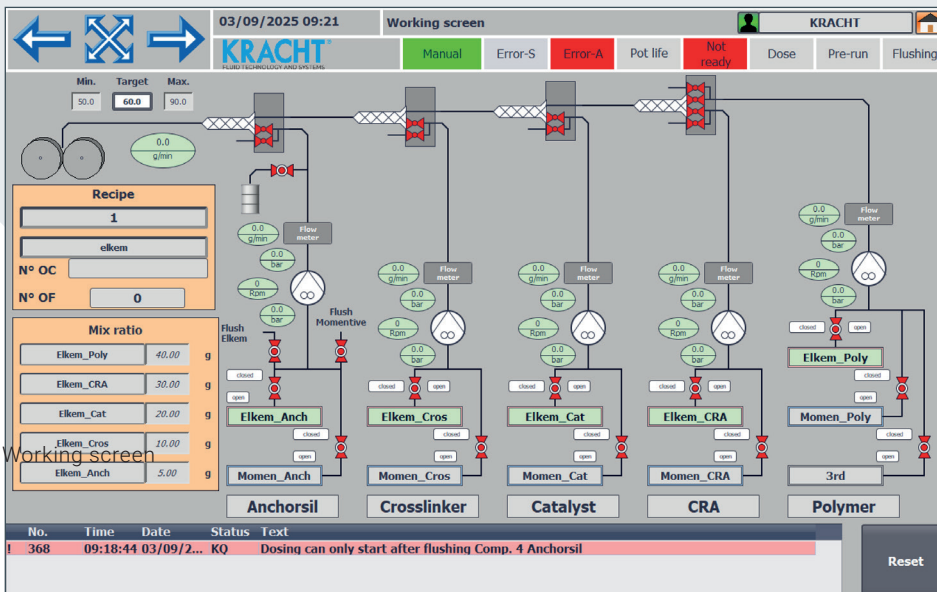
- > **High precision** inline gear metering
- > **Mass flow controlled metering** for maximum accuracy
- > **Modular system architecture** enabling tailored configurations and future scalability
- > **Flexible processing** of diverse silicone materials, mix ratios and formulation types
- > **Innovative inline mixing technology** for consistent, high quality silicone preparation
- > **Clear & safe storage management** for controlled handling of all components
- > **Minimized material losses** through optimized metering and intelligent process control
- > **Continuous, stop free production** with stable flow and real time ratio adjustment
- > **On demand supply to the coating line** for reproducible and reliable coating results
- > **Processing from IBCs, 200 L drums or small containers**, depending on production needs
- > **Low maintenance design** with easy access and service friendly components
- > **Industry proven technology** specifically designed for release liner manufacturing

CONTROL SYSTEM

The PGM Silicone control system combines a modern PLC platform with KRACHT advanced metering software to deliver fully automated process control., seamless recipe and material management, and comprehensive connectivity from HMI operation to MES/SAP integration.

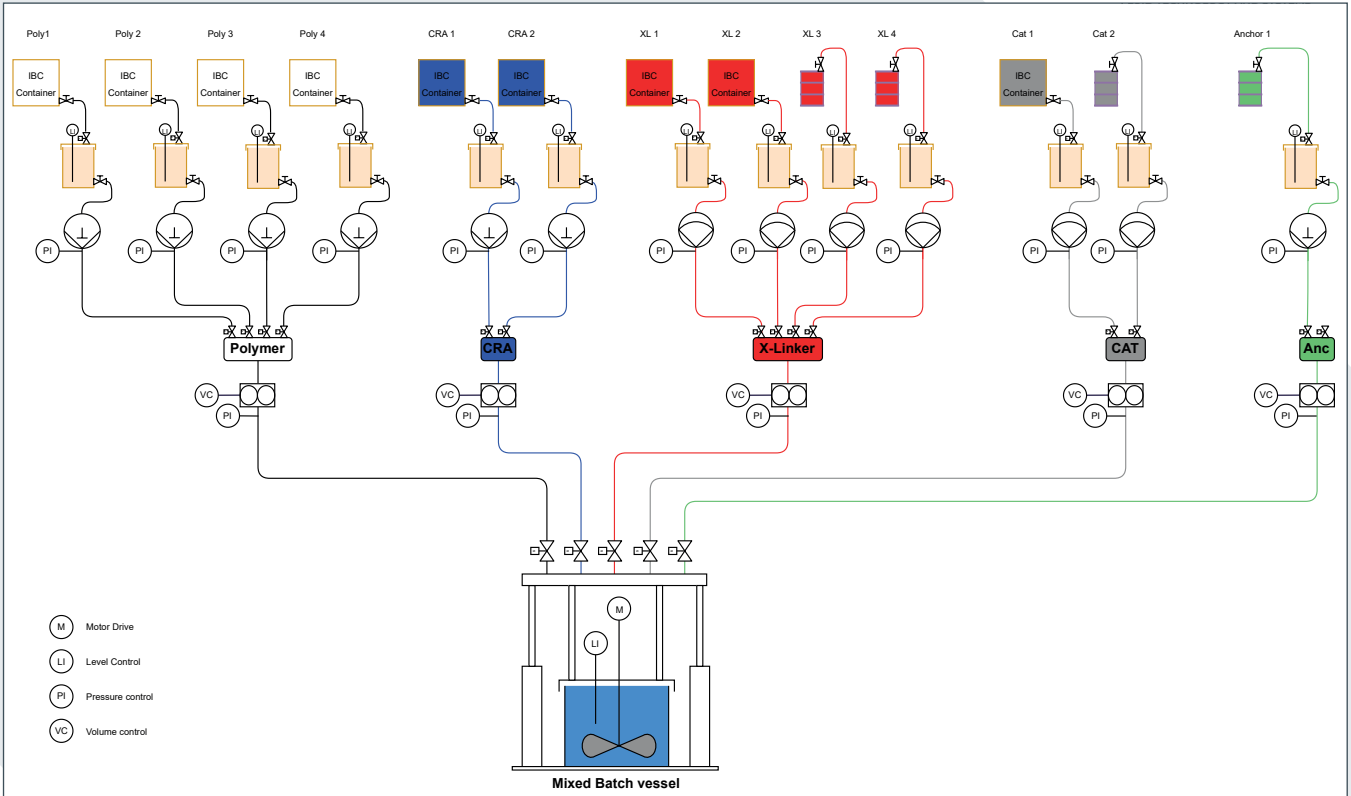
- > **PLC control platform** with high-resolution comfort-class touch **HMI**
- > KRACHT **metering software** for parameterization and monitoring
- > **Automatic control and visualization** of process parameters
- > **Recipe management** and **Remote control**
- > **OPC-UA server** is included to have access to all data within the CPU
- > **Remote maintenance** access
- > **Material storage** and **Recipe management**
- > Interface to **MES/SAP** systems
- > **Nip sensor** for **real-time level monitoring** enabling fully automatic, demand-oriented mixed material Nip control, including material-shortage and overflow detection

PLC control platform with high-resolution comfort-class touch HMI:

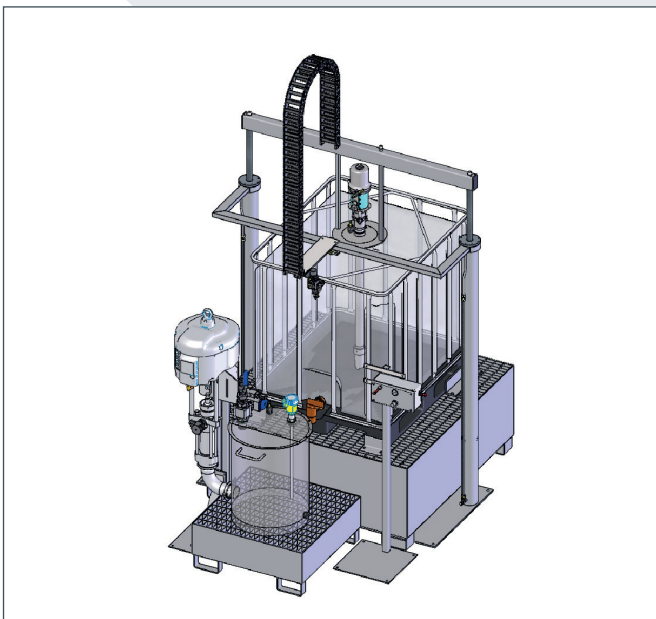


PCM SILICONE

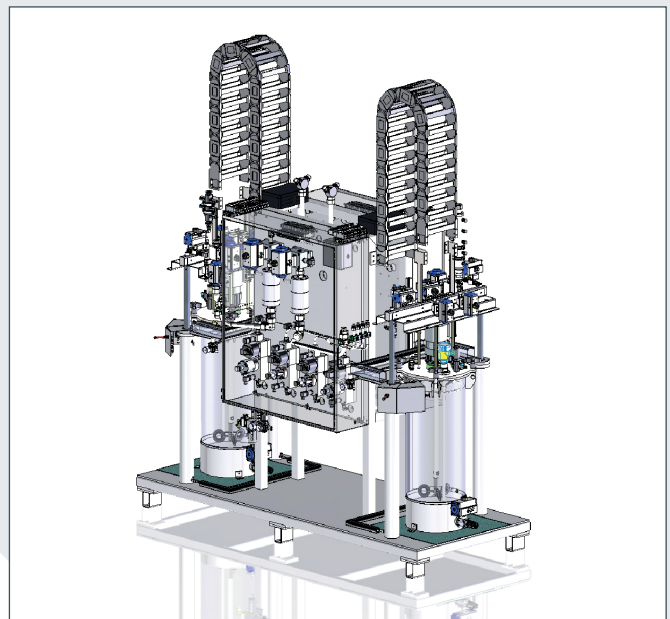
The PCM system is a fully automated, recipe-driven batch solution for high-performance silicone processing, enabling precise handling of complex formulations. It supports solvent-based and UV-curable silicones, is available in ATEX-compliant configurations, and reliably supplies consistently mixed batches to the coater.



Modular dispensing concept enabling the fully automated processing of multiple silicone formulations across various silicone systems and material families.



Flexible material supply from IBC containers, 200-liter drums, or small-volume units, ensuring a continuous production flow without downtime.



Dispensing station for fully automated batch preparation and transfer to the coater nip without production downtime. Suitable for installation in ATEX-classified areas.

SERVICE AND SUPPORT

YES WE CARE. There for you worldwide.

Whether KRACHT systems or equipment from other manufacturers such as 2KM – our service does not end with the sale.

Our services at a glance:

- > **Global technical support** – fast, solution-oriented, multilingual
- > **Maintenance contracts and inspections** – Planned safety instead of unplanned downtime
- > **Remote maintenance and on-site service** – efficient, flexible and tailored precisely to your requirements
- > **Fast spare parts supply** – high availability, short delivery times, minimal downtime
- > **Retrofit & plant optimisation** – Modernisation of existing systems for greater performance and efficiency
- > **Training courses for operators and maintenance personnel** – Know-how transfer directly from the manufacturer
- > **Trained service technicians** – experienced, solution-oriented and with a deep understanding of all system generations

International service – locally available

Our global service network guarantees reliable support – no matter where you manufacture. With fast response times and personal commitment, we ensure your production capability.

Your benefits at a glance:

- > **No costly downtime**
- > **Customised service concepts** – tailored to your processes and systems
- > **Planning reliability thanks to fixed service intervals**
- > **Increased plant availability and longer service life**

CONTACT

Expert advice – personalised and solution-oriented

Please contact us.

Our experts are at your side with in-depth specialist knowledge and many years of experience. Whether you need tailor-made special solutions or technical optimisations, we understand your requirements and work with you to develop the best solution for your process.

Your success is what drives us.



Kevin Almus

Phone +49 2392 935 296

E-Mail kevin.almus@kracht.eu



Erwin Fröse

Phone +49 2392 935 246

E-Mail erwin.froese@kracht.eu

NOTES

KRACHT GmbH

Gewerbestrasse 20
58791 Werdohl, Germany
Phone: +49 2392 935 0
E-Mail: info@kracht.eu

kracht.eu

PGM Silicone/EN/02.2026
Errors and technical changes excepted.

■ **Part of Atlas Copco Group**

KRACHT[®]
FLUID TECHNOLOGY AND SYSTEMS