

LSR

METERING SYSTEMS
FOR EVERY APPLICATION -
MODULAR AND EFFICIENT

KRACHT®

FLUID TECHNOLOGY AND SYSTEMS

CONTENT

SilcoStar E-Drive PRO	4
Servo-electric linear drive	4
User-Interface – PRO	6 - 7
New E-Drive mixing head	8 - 9
SilcoStar HY-Drive SMART and EASY	10
Hydraulic metering pump drive	11
User-Interface – SMART	12
User-Interface – EASY	13
SilcoStar HY-Drive HF and SHF	14 - 15
SilcoStar Mini	16 - 17
PFM (Process Flow Mix) – Piston feeder	18
PCM – Process Control Mix	19
Color management	20 - 21
ColorTech	20
Ink feeders	21
Options	22
Service / Support / Contact	23

SILCOSTAR E-DRIVE PRO

The SilcoStar E-Drive series is a servo-electric driven metering and mixing system for demanding tasks with a variable mixing ratio for the production of liquid silicone molded parts.



- > Servo-electric linear drive
- > High-precision metering
- > No viscosity restrictions
- > Patented mixture pressure control
- > Patented drum base support
- > Integrated pressure monitoring
- > Standardised connection panel
- > Level and status display via dynamic LED strip
- > 200 or 20 litre drums
- > Automatic system ventilation
- > „Medical ready“

SERVO-ELECTRIC LINEAR DRIVE

Precision, durability and efficiency for the highest demands

Our servo-electric linear drive with **planetary roller screw drive** sets new standards in modern drive technology. Developed for maximum load capacity and durability, it offers up to **10 times longer service life** compared to conventional ball screw drives.

Maximum reliability – even under extreme conditions

The special design of the planetary roller screw drive ensures minimal friction and low wear. The result: **consistent performance** and **maximum operational reliability**, even in demanding production environments.

Precision, right to the point

Thanks to precise control units, the drive enables **highly accurate metering**, even with very small shot weights. Ideal for applications where the **exact mixing ratio** determines the quality of the end product.

Energy efficiency that pays off

Servo-electric drive technology impresses with its **resource-saving operation** and **significantly reduced energy costs** – a plus for your sustainability balance sheet and your budget.

Your benefits at a glance:

- > Up to 10 times longer service life compared to ball screws
- > Highest precision for the smallest metering quantities
- > Low maintenance and reliable under continuous load
- > Optimal solution for modern, future-oriented manufacturing processes



Invest in the future of your production –
with a system that sets standards.

USER-INTERFACE – PRO

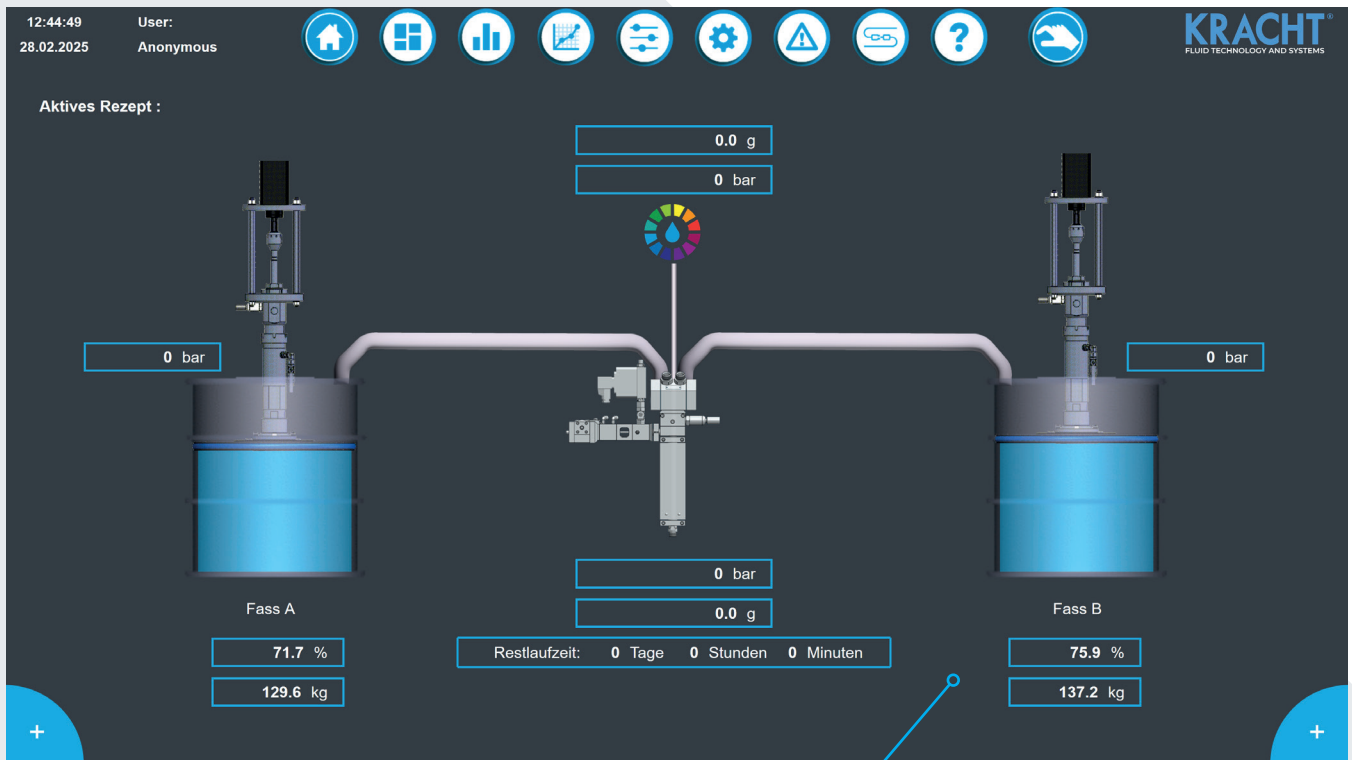
High-end control for maximum control and efficiency

The **SilcoStar Pro series** redefines control in metering and mixing technology. With a **15.6" multi-touch display**, intelligent software and comprehensive system integration, it ensures **user-friendly, precise and future-proof production**.

Your benefits at a glance:

- > **Intuitive operation**
Convenient control via a generous 15.6" multi-touch display – modern, responsive and clear.
- > **Maximum precision**
Software-controlled adjustment of the mixing ratio in real time – for consistently high-quality results.
- > **Predictive Maintenance**
Predictive maintenance through intelligent evaluation of operating hours and material throughput – minimises unplanned downtime.
- > **Guided maintenance with multimedia support**
Interactive image and video instructions guide you step by step through maintenance tasks such as replacing drums or seals.
- > **Process optimisation through data analysis**
Charts and operational data analyses provide valuable insights for increasing efficiency and quality assurance.
- > **Customised user management**
RFID-based user identification and individually defined access rights, together with a configurable home screen, create a task-oriented, secure work environment.
- > **Industry standard interface**
Seamless integration into existing production systems thanks to EUROMAP 82.3 compatibility.

PRO – the control system for the highest demands: innovative, intuitive and intelligent.



E-DRIVE MIXING HEAD

**The new benchmark in mixing:
Our innovative E-Drive mixing head –
compact, efficient and precise.**

Experience the next evolutionary stage in **mixing technology** – with our high-performance mixing head, specially developed for the servo-electrically driven **SilcoStar E-Drive** systems. Designed for maximum productivity, minimum downtime and maximum user-friendliness.

Your benefits at a glance:

> **Cleaning in record time**

Minimised machine downtime: The sophisticated design enables complete cleaning in under **8 minutes** – for maximum machine availability and reduced maintenance costs.

> **Minimal downtime**

Thanks to optimised flow geometry and smart material handling, your production runs more efficiently than ever before – with noticeably fewer downtimes.

> **Ergonomic design**

The mixing head is lightweight, compact and designed to be particularly user-friendly. Easy handling and quick replacement make it the ideal partner for your production.

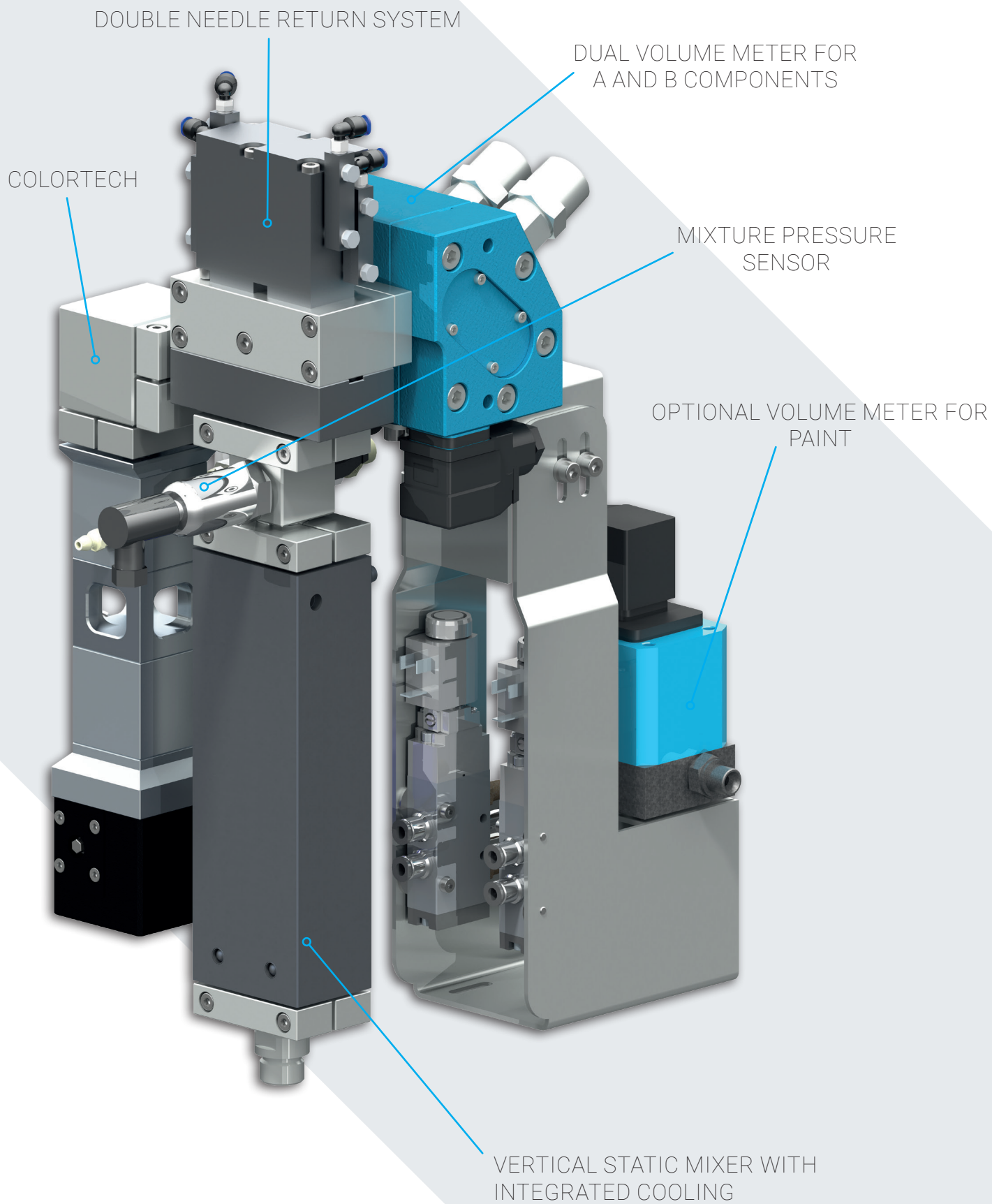
> **Dynamic colour metering (ColorTech)**

Our integrated control technology ensures that the ink addition dynamically adapts to changing volume flows – for consistently accurate ink mixing ratios without manual readjustment.

> **Needle valves prevent material backflow**

Volume relief through optimised needle valves prevents the material from being pushed back into the screw.

Experience the perfect symbiosis of
precision and efficiency.



SILCOSTAR HY-DRIVE SMART AND EASY

The SilcoStar HY-Drive series offers a powerful, hydraulically driven alternative for metering and mixing applications. With the SMART and EASY variants, you have two reliable solutions with a fixed mixing ratio at your disposal – tailored to your specific production requirements.



- > Hydraulic metering pump drive
- > Precise metering
- > No viscosity restrictions
- > Maintenance-friendly design – ideal for mass production
- > Patented drum bottom support
- > Integrated pressure monitoring
- > Standardised connection panel
(central interface for material connection, pneumatics and electronics)
- > 200 or 20 litre drums
- > Automatic system ventilation
- > SMART and EASY control

HYDRAULIC METERING PUMP DRIVE

Powerful. Reliable. Economical.

Our **hydraulic metering pump drive** is the perfect solution for industrial applications with high volumes. Specially developed for the requirements of **mass production**, it guarantees **consistently high performance** – even during long operating times and high cycle frequencies.

Easy to integrate, flexible to use

The **intuitive controls** (SMART and EASY) and user-friendly interface allow the system to be integrated **quickly and easily** into existing production lines. Its high adaptability makes it ideal for changing processes and variable metering tasks.

Maximum availability thanks to maintenance-friendly design

The well-designed, robust construction reduces maintenance to a minimum. **Shorter downtimes** and **increased machine availability** boost the efficiency of your entire plant.

Efficient and durable – at full power

Our hydraulic drive combines the strengths of hydraulic systems with high energy efficiency: compared to electrical or pneumatic alternatives, it scores with lower energy consumption and an above-average service life.

Your benefits at a glance:

- > Reliable performance even at high clock speeds
- > Quick commissioning and easy integration
- > Low maintenance & durable for maximum machine availability
- > Lower energy consumption compared to alternative drive systems
- > Cost-conscious and powerful – ideal for budget-oriented projects



The ideal drive for efficient series production – robust, economical and ready for continuous use.

USER-INTERFACE – SMART

Intelligent control for demanding metering processes

The USER-INTERFACE SMART stands for maximum flexibility, precise process control and future-proof integration. It is the ideal solution for applications with fixed mixing ratios and high demands on ease of use and automation.

Your benefits at a glance:

- > **7-inch multi-touch display**
Intuitive operation and clear visualisation of all process parameters
- > **User management with access rights**
Individually configurable profiles for greater security and efficiency
- > **EUROMAP 82.3 interface**
Standardised connection for seamless integration into existing production systems



USER-INTERFACE SMART – a control system that grows with your requirements.

USER-INTERFACE – EASY

Compact efficiency with simple operation

The USER-INTERFACE EASY impresses with its particularly simple handling, high reliability and compact design. It is the ideal solution for applications with a fixed mixing ratio (1:1) where fast and uncomplicated operation is paramount.

Your benefits at a glance:

- > **Intuitive operation via buttons and potentiometers**
Quick and easy adjustment of all relevant parameters – without a touch display
- > **Fixed mixing ratio 1:1**
Perfect for standard applications with constant material requirements
- > **Compact design**
Space-saving integration into a wide variety of system concepts
- > **DIGITAL EA interface**
Effortless integration into existing production processes



USER INTERFACE EASY – efficient, clear and focused on the essentials.

SILCOSTAR HY-DRIVE HF AND SHF

High performance in series production – for large shot weights and maximum output

The HY-Drive variants HF (High Flow) and SHF (Super High Flow) were developed specifically for applications with particularly high material throughput. Whether 6 L/min or up to 10 L/min – both systems offer powerful, precise and reliable metering for large-volume components, multi-cavity moulds and fast cycle times.

Your benefits at a glance:

- > HY-Drive HF – flow rate up to 6 L/min
- > HY-Drive SHF – Flow rate up to 10 L/min (standard up to 10 L/min, larger volumes on request).
- > Designed for high shot weights and series production
- > Robust, low-maintenance design for continuous operation
- > Maximum process reliability – even at maximum throughput
- > Colour and additive metering

Typical applications of the HF variant:

- > Insulators for high-voltage installations – large-volume LSR components with high material requirements
- > Cable joints for high-voltage lines – consistent metering with high shot rates
- > Other industrial applications with large filling volumes and short cycle times

Powerful metering for large volumes –
robust, efficient and reliable.



SILCOSTAR MINI

Compact. Precise. Ideal for testing and development.

The SilcoStar Mini is the smart entry-level solution for the precise metering of small quantities of LSR – perfectly suited for prototype construction, material qualification, laboratory applications or small series production. It is supplied directly from cartridges and impresses with its compact design, easy handling and high repeat accuracy with minimal material consumption.

Your benefits at a glance:

- > Direct supply from standard cartridges – no drum change required.
- > Precise metering for small shot volumes
- > Ideal for test samples, test series and process development
- > Easy to operate – manually or with optional mini control unit
- > Compact footprint – can be integrated into laboratory environments or small machine cells
- > Optionally available with heated cartridge holder and temperature monitoring
- > Low maintenance and portable – perfect for flexible locations

Precise small quantities –
for laboratories, prototyping and flexible
manufacturing.



PFM (PROCESS FLOW MIX) – PISTON FEEDER

**Micrometering at the highest level.
Flexible. Precise. Pressure-independent.**

The PFM piston feeder is the ideal solution for extremely precise micro shots – regardless of inlet pressure, material viscosity or container size. It operates with its own drive and allows the exact metering of even the smallest quantities of material – also in combination with additives..

Your benefits at a glance:

- > High-precision micrometering – ideal for medical technology and electronics
- > Self-powered – no dependence on external material pressure
- > Flexible material feed: cartridges, pressure containers, 20-litre hobbocks or 200-litre drums
- > Integrated material preparation – e.g. for silicones with additives
- > Process stability even with changing material conditions
- > Compact, modular and adaptable to different processes

Precise micro shots – independent
of material pressure and flexible in use.

PCM – PROCESS CONTROL MIX

Central supply. Simultaneous precision. Pressure-regulated.

The PCM (Process Control Mix) system is a powerful solution for supplying multiple injection moulding machines with precisely metered LSR simultaneously. Up to four mixing heads can be operated simultaneously via optional tandem feed and pressure-controlled line systems – ideal for parallel production processes with high quantities and varying cycle times.

Your benefits at a glance:

- > Pressure-regulated mixing head for consistent conditions during variable consumption
- > Volumetric metering via individually controllable metering valves on the mixing head
- > Supply up to four injection moulding machines simultaneously – from just one central unit
- > Flexibly scalable – ideal for cluster production, cell concepts or multi-cavity layouts
- > Uniform material distribution – with maximum process reliability



Centralised supply, precise distribution – perfect for parallel processes.

COLOR MANAGEMENT – PRECISE METERING AND RELIABLE SUPPLY

A new approach to colour processing

Our modular colour management system combines maximum metering accuracy with flexible material feeding – for consistent quality, fast colour changes and maximum process reliability.

Colour processing is divided into two functional areas:

1. **ColorTech** – for precise and intelligent metering of the desired amount of paint
2. **Color feed** – for the safe, clean, and efficient supply of paints and additives to the system from flexible container sizes

Together, these components enable **scalable and future-proof color handling** that can be seamlessly integrated into existing production environments.

COLORTECH – PRECISE INK METERING AT THE HIGHEST LEVEL

Intelligent. Flexible. Reproducible.

ColorTech is our sophisticated ink metering system for maximum ink precision and process reliability. The percentage of ink can be selected directly in the control system reproducible, efficient, and fully automated.

Your benefits at a glance:

- > Proportional ink metering valve for precise ink proportions
- > Control-integrated percentage selection
- > Independent control based on flow rate or shot weight
- > Metering range from 0.02% to 5%
- > Suitable for all colors and additives
- > Volume counter for precise control (optional)

Color management that impresses – precisely measured, reliably supplied, flexible in use.

INK SUPPLY – COMPACT, MOBILE, AND UNIVERSALLY APPLICABLE

Stable supply. Quick change. Minimal effort.

The ink supply system ensures a continuous, reliable supply of inks and additives to the system. Whether 1-, 10-, or 20-liter containers: the system is flexibly adaptable and ideally designed for mobile use.

Your benefits at a glance:

- > Compact ink supply pump with constant delivery rate
- > Suitable for 1 L pressure vessels, 20 L hobbocks, and 10 L paint feeders with funnels
- > Easy to clean – ideal for frequent color changes
- > Can be used for all colors and additives
- > Monitoring of feed pressure for process safety
- > Mobile system with agitator - perfect for filling local storage containers (feed unit from 20 L hobbocks)
- > Adaptable to all common machine types



OPTIONS

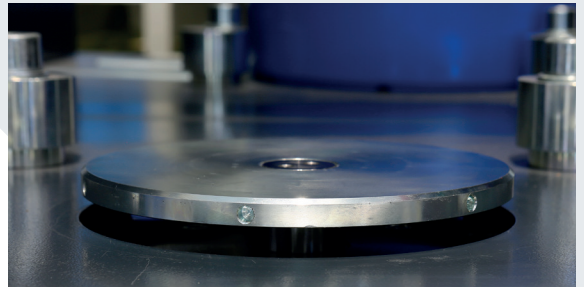
PNEUMATIC DRUM BOTTOM SUPPORT

Minimal losses. Maximum resource utilization.

The patented, pneumatically operated drum bottom support enables the drums to be emptied evenly and almost completely.

Your benefits at a glance:

- > Residual quantities below 1% – less waste, lower costs
- > Significantly more efficient than standard solutions – proven by practical comparison



CPP.READER - AUTOMATED DRUM RECOGNITION

Maximum safety. Reliable drum identification.

The intelligent CPP.reader ensures that material changes are fully secured. Two state-of-the-art camera modules check the labeling on both drums and only release the feed unit if they match completely. An integrated QR code scanner also documents relevant information such as batch number, date of manufacture, and shelf life—for complete traceability and absolute process reliability.

Your benefits at a glance:

- > Feed release only with exact drum assignment—thanks to optical recognition
- > QR code scan for tracking batch, manufacturing, and expiration dates
- > Avoiding confusion – maximum transparency and security
- > Avoidance of costly cleaning processes due to mixed-up drums



Fewer losses, maximum process reliability – options that pay off.

SERVICE AND SUPPORT

YES WE CARE. There for you worldwide.

Whether SilcoStar E-Drive, HY-Drive, or systems from other manufacturers such as 2KM - our service does not end with the sale. We support your production throughout the entire life cycle: competently, reliably, and always available.

Our services at a glance:

- > **Global technical support** – fast, solution-oriented, multilingual
- > **Maintenance contracts and inspections** – Planned safety instead of unplanned downtime
- > **Remote maintenance and on-site service** – efficient, flexible and tailored precisely to your requirements
- > **Fast spare parts supply** – high availability, short delivery times, minimal downtime
- > **Retrofit & plant optimisation** – Modernisation of existing systems for greater performance and efficiency
- > **Training courses for operators and maintenance personnel** – Know-how transfer directly from the manufacturer
- > **Trained service technicians** – experienced, solution-oriented and with a deep understanding of all system generations

International service – locally available

Our global service network guarantees reliable support – no matter where you manufacture. With fast response times and personal commitment, we ensure your production capability.

Your benefits at a glance:

- > **No costly downtime**
- > **Customised service concepts** – tailored to your processes and systems
- > **Planning reliability thanks to fixed service intervals**
- > **Increased plant availability and longer service life**

CONTACT

Expert advice – personalised and solution-oriented

Please contact us.

Our experts are at your side with in-depth specialist knowledge and many years of experience. Whether you need tailor-made special solutions or technical optimisations, we understand your requirements and work with you to develop the best solution for your process.

Your success is what drives us.



Kevin Almus

Phone +49 2392 935 296

E-Mail kevin.almus@kracht.eu



Erwin Fröse

Phone +49 2392 935 246

E-Mail erwin.froese@kracht.eu



Christian Ocker

Phone +49 2392 935 215

E-Mail christian.ocker@kracht.eu

KRACHT CORP.

6552 Weatherfield Court
Maumee, OH 43537

Phone: +1 419 874 1000

E-Mail: sales@krachtcorp.com

krachtcorp.com

LSR/US/02.2026

Errors and technical changes excepted.

■ **Part of Atlas Copco Group**

KRACHT®
FLUID TECHNOLOGY AND SYSTEMS